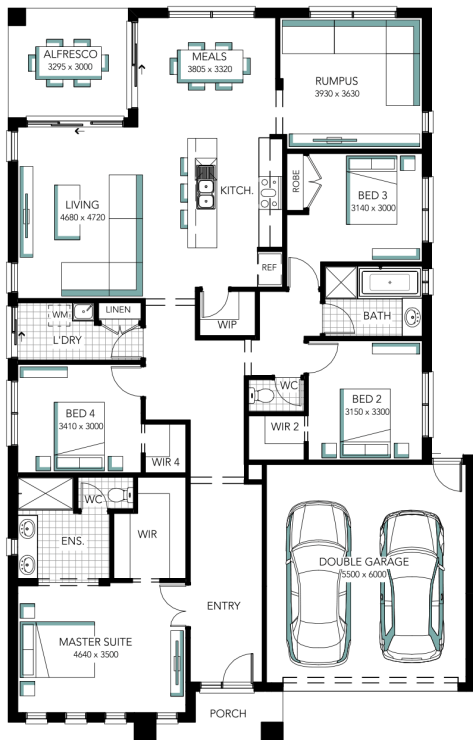




## Brookvale 25



ADDRESS	LOT WIDTH	LOT SIZE	HOUSE SIZE
Lot 230 Bramwell Avenue, Leneva Valley Estate	15.00	647.00 m <sup>2</sup>	233.57 m <sup>2</sup>



### Your Inclusions

### Package Enquiries

Call us on 1300 781 716

All prices quoted in this document are for blocks up to 700m<sup>2</sup> in local urban areas on a flat site with up to 'M' type soil classification. Sloping blocks will incur additional costs and will be quoted separately. Prices are for the 'Neo' façade. Other façade options are available. Bushfire Attack Level - all costs to be advised after site assessment and calculation of BAL rating. All prices are subject to change to accommodate energy rating requirements specific to the clients proposed building site, all additional costs to be advised after energy rating. Prices are subject to change without notice.